

SkyHawk R-type Module Specification

Monocrystalline 6X24 Solar Modules for Rooftop Type

182mm / M10 Solar Cell

535Wp / 540Wp



The highest Mechanical Load Test in PV Industry



Better LCOE



Improved module power output performance by reducing module working temperature



Advanced Non-Destructive Cutting Technology



World's best PID resistant



Multi Busbar Technology



The toughest Salt Mist Test in PV Industry

Green Energy

Made in Taiwan



Sustainable Development



SkyHawk R-type Module Specification(182mm / M10 Solar Cell) Monocrystalline 6X24 Solar Modules for Rooftop Type 515-540Wp



Electrial Data		TS72-BMH-515 H1	TS72-BMH-520 H1	TS72-BMH-525 H1	TS72-BMH-530 H1	TS72-BMH-535 H1	TS72-BMH-540 H1
Model Name		TS72-BMH-515 H1	TS72-BMH-520 H1	TS72-BMH-525 H1	TS72-BMH-530 H1	TS72-BMH-535 H1	TS72-BMH-540 H1
Max. power at STC	Pmax W	515	520	525	530	535	540
Max. power voltage	Vmp V	40.90	41.05	41.20	41.35	41.50	41.65
Max. power current	Imp A	12.61	12.69	12.75	12.82	12.90	12.97
Open circuit voltage	Voc V	48.75	48.90	49.05	49.20	49.35	49.50
Short circuit current	Isc A	13.52	13.59	13.65	13.71	13.78	13.85
Module Conversion Eff.	%	20.0%	20.2%	20.4%	20.5%	20.7%	20.9%

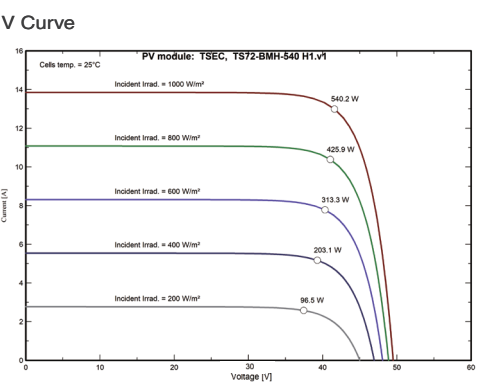
* Under Standard Test Condition(1,000W/m²,25°C,AM 1.5): Power Tolerance ±3%
* Module Conversion Eff. (%) = [Max power at STC(w) / ((Solar Module Area(m²) x 1000 (w/m²))] x 100%

General Data	
Cell type	M10 Monocrystalline
Cell per module	Mono-crystalline silicon solar cell (144 pcs)
Front	Low-iron tempered glass
Encapsulant Film	Ethylene Vinyl Acetate(EVA)
Rear	Composite film
Frame	Anti-Salt Mist aluminum (silver/black)
Junction Box	IP68
Connector	EVO-2 Compatible
Cable	1500mm / 4mm²

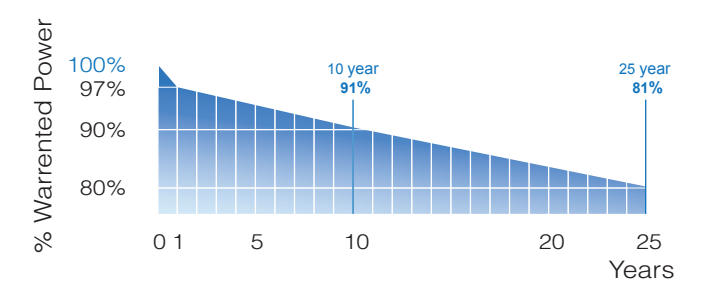
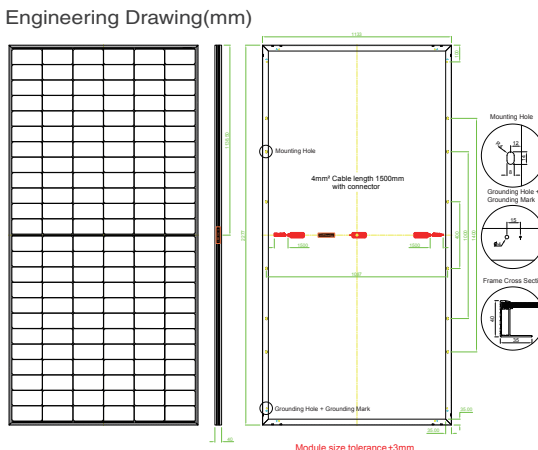
Temperature Coefficient			
Nominal Operating	NOCT	°C	45±2
Cell Temperature			
TC Isc	α	%/°C	+0.06
TC Voc	β	%/°C	- 0.27
TC Pmax	γ	%/°C	- 0.35

Operation Conditions	
Max. system voltage	1500V
Module fire resistance class	Class C
Protection Class (IEC 61140)	Class II
Series fuse rating	25 A
Number of bypass diodes	3
Temperature range	-40 to +85°C
Max. mechanical load	7100 pa(front side) 5400 Pa(rear side)
* Please follow installation manual provided by TSEC	

Module Dimensions and Weight	
Dimension	2277 x 1133 x 40 mm
Weight	27.5 Kg



- Certifications**
- IEC 61215:2016、IEC 61730-1:2016 & IEC 61730-2:2016
 - ISO 9001:2015 Quality management system
 - ISO 14001:2015 Environmental management system
 - ISO 45001:2018 Occupational health and safety management system



- Warranty**
- 12-year materials and workmanship warranty
 - 25-year linear power warranty

Made in Taiwan * The information in this document is subject to change without notice * TSEC reserves the rights of final interpretation and revision of datasheet * Version : Rev.4, April 2023